

FREEHOLD
永久地契

Pulai
Hijauan 禧绿苑

Price from
售价从 RM **595,000***

tph LINK

PHASE 9 (PARCEL 2)
@TAMAN PULAI HIJAUAN

42

Units 个单位

Land Area 土地面积
22' x 70'

Built-up Area 建筑面积
2,997 sq.ft.

DOUBLE STOREY SHOP OFFICE
双层商务办公楼

Limited Bumi Released Units 土著开放单位

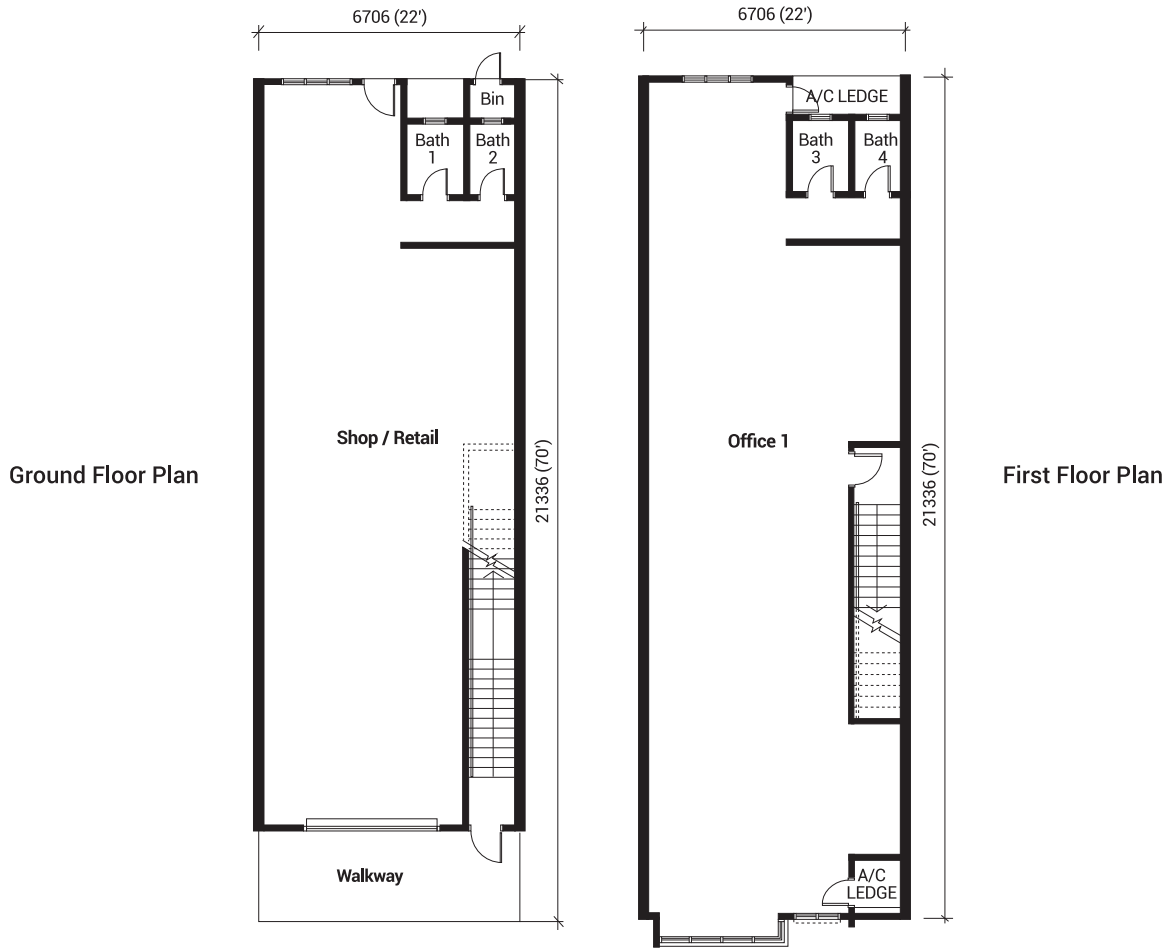
EMPOWERING MODERN BUSINESS

优质的全方位商业中心

TPH Link's newly launched parcel is strategically located fronting Skudai-Pontian Highway. This vibrant commercial centre offers an abundance of flexibility with excellent consumer flow.

TPH Link全新推出的商务办公楼面向士姑来-笨珍大道，其策略性位置有利于客户来源为此提供了无限商机。

TYPICAL FLOOR PLAN



Another Prestigious Project By:



DEVELOPER:
GRANDEUR PARK SDN. BHD. (201863-A)
 53 & 55, Jalan Besi, Taman Sri Putri,
 81300 Skudai, Johor.
 Tel : 07-559 1388

07 559 1388
www.huayang.com.my

Disclaimer: The information, perspectives, photographs, floor plans and proposed development plan contained in this circular are subject to change and cannot form part of an offer or contract. All renderings and pictures are artist's impression only and all measurements are approximate. While every reasonable care has been taken, Grandeur Park Sdn, Bhd, and its Advertising Agency cannot be held responsible for any inaccuracies. *Terms and conditions apply.